



IntelliTrans

GLOBAL SUPPLY CHAIN TRANSPARENCY

28 Years Of Supply Chain Leadership



IntelliTrans

Technology-Enabled Transportation Management Services Company



Visibility



TMS

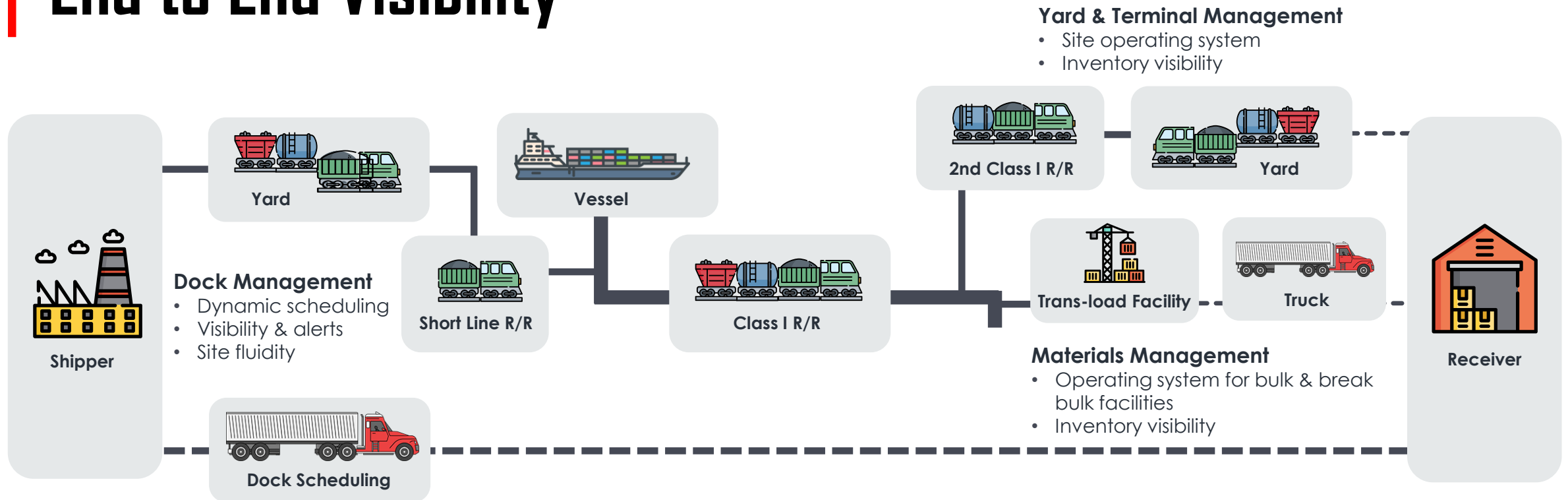


Inventory



Services

End to End Visibility



TMS

- Contract & tariff management
- Mode selection
- Load planning
- Shipment execution
- Rating, auditing, & payment

In Transit Visibility

- Multi-modal shipment tracking & ETAs
- Data completion & exception mgmt. services
- Shared access & proactive alerting

Vendor Managed Inventory

- Remote telemetry
- Inventory monitoring
- "No touch" order creation



Accessorial Management

Multi-Pronged Approach to Cost Reduction

- Negotiation
- Execution
- Accrual
- Audit
- Improve

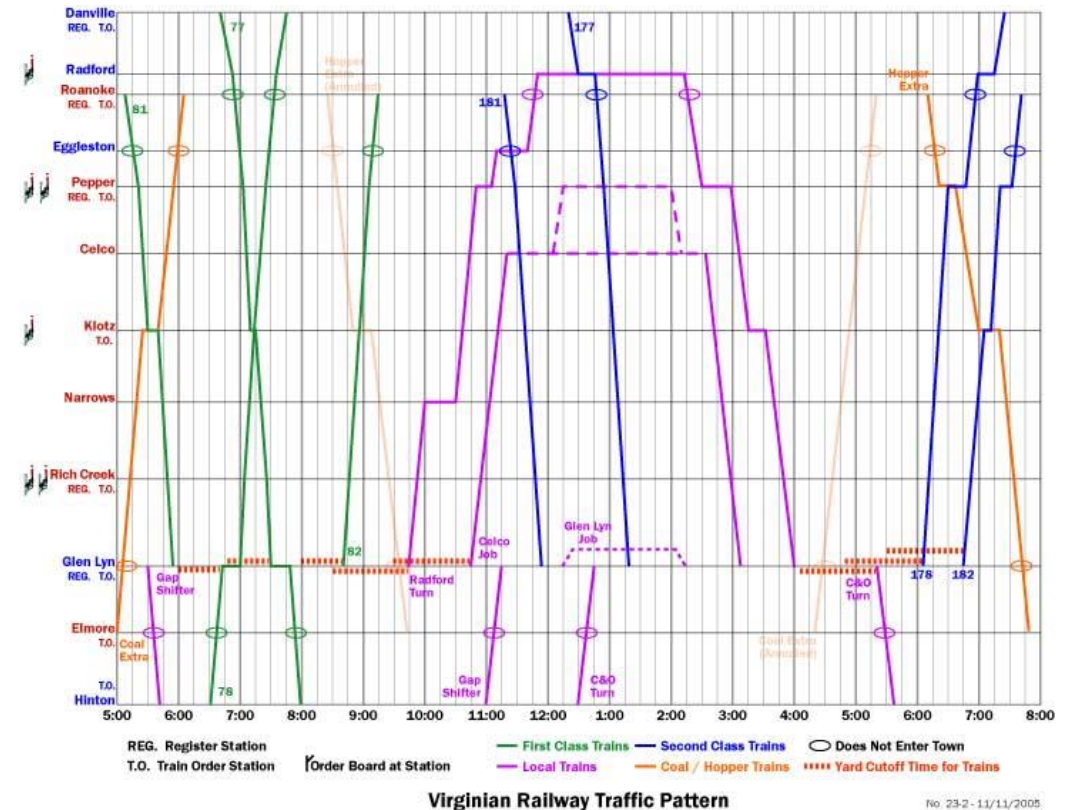
Reduce Accessorial Fees by ~35%



Negotiation

Proper Approach Can Yield Mutually Beneficial Results

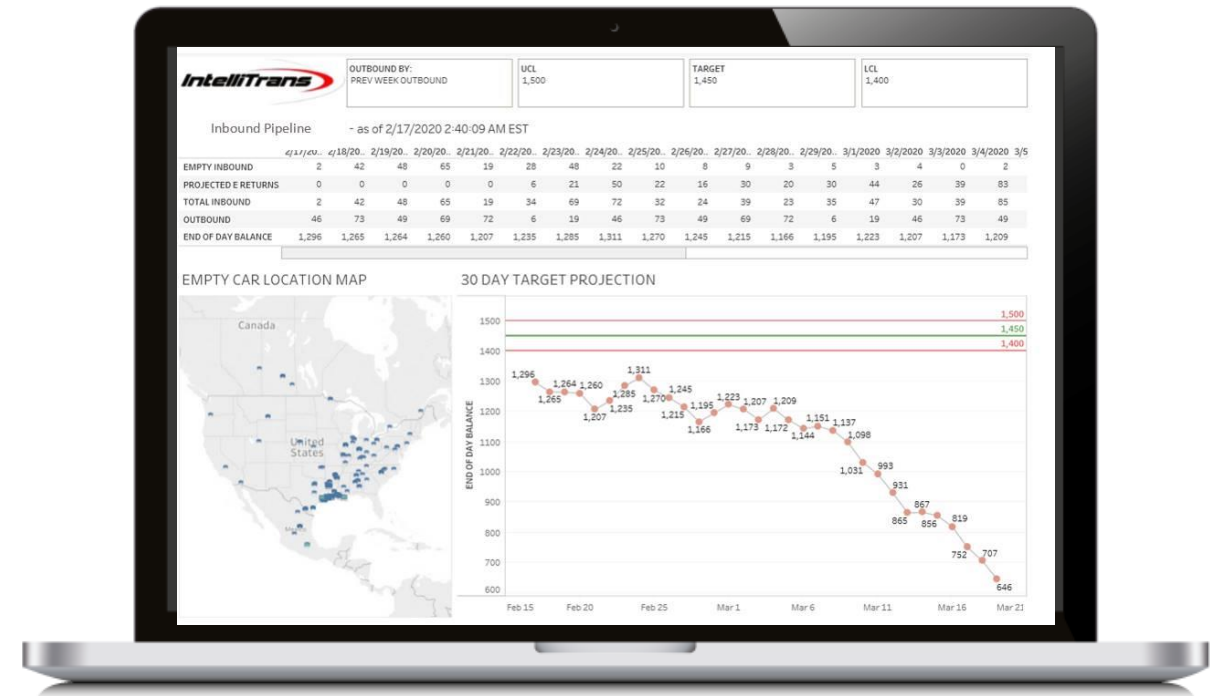
- Focus on key objectives
- Determine flexibility
- Interactive communication
- Backward imaging
- Planning & contingency planning
- Mutual performance monitoring
 - Joint scorecards



Execution

Define Flawless Execution & Measure Achievement

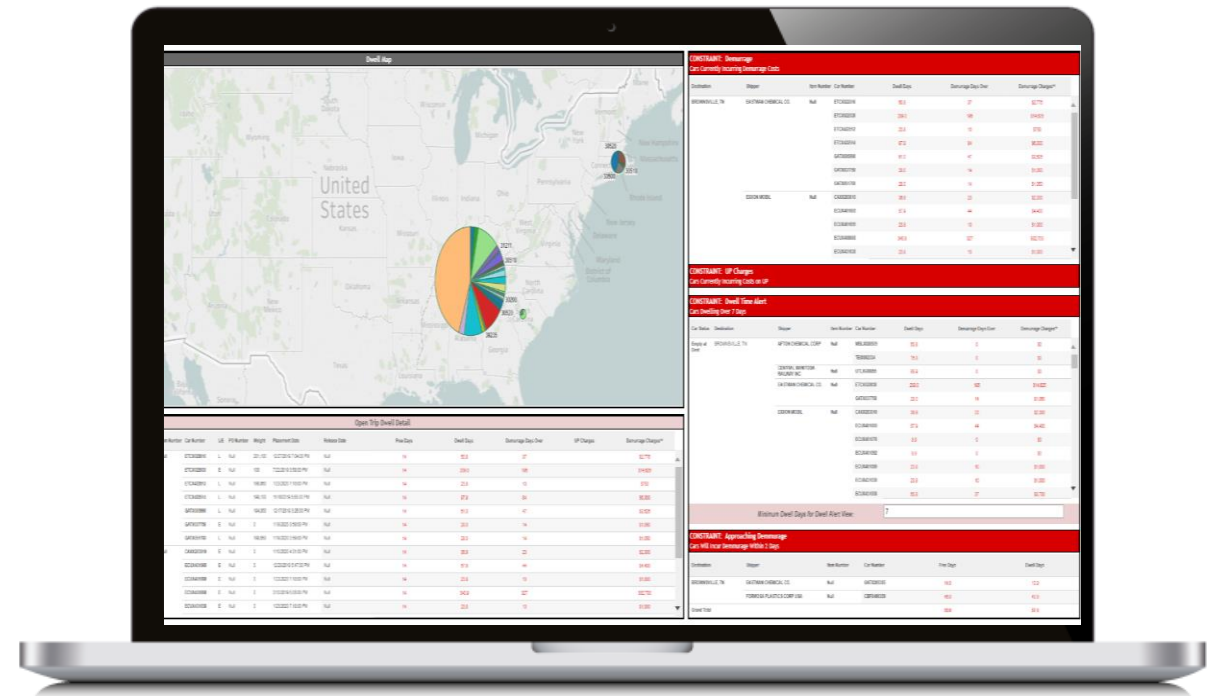
- Empty Asset Supply
- Yard Management
- Billing Automation
- Exception Management
- Process Exception Management
- Scorecards & Continuous Improvement



Accrual

Accurate Prediction & Capture of Costs

- Completely, timely, accurate data
- Contract & tariff rate capture
- Calculation Tools
- Invoice Capture
- Proactive Communication



BENEFITS OF EMBEDDED AUDITING

Cost Reduction:

23%



Business Problem

- \$2.6M in accessorial charges
- Poor visibility of inbound empty cars and raw materials
- Holding cars for sampling has led to demurrage



Objectives

- To provide inbound pipeline visibility with dynamic ETAs
- To reduce loaded/empty dwell and transit time
- To include private car storage, load-and-hold, and switching in the demurrage mgmt. process



Process

- Develop and review car aging reports to analyze dwell time
- Implement alerts and alarms to expedite traffic and reduce bunching
- Analyze car order process and identify opportunities to improve
- Align inbound to supply with yard capacity, production schedules, and shipping schedules



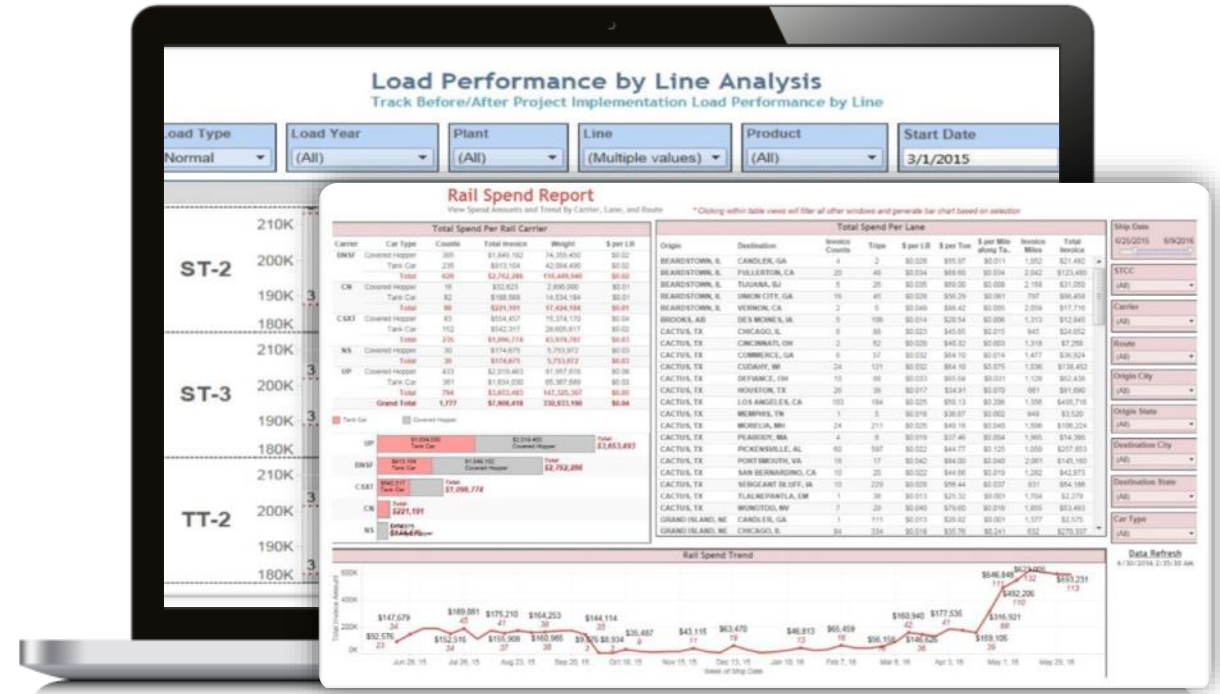
Results

- Reduced accessorial charges and total rail cost
- Increased car productivity

Continuous Improvement

Data-Driven Decision Making

- Real-Time Reason Coding
- Embedded Analytics
- Brainstorming
- Collaborative Plan Development
- Validation
- Celebrate Success
- On-going Monitoring – Inputs & Outputs



Accessorial Management

Multi-Pronged Approach to Cost Reduction

- Negotiation
- Execution
- Accrual
- Audit
- Improve

Reduce Accessorial Fees by ~35%



IntelliTrans

We provide a unified and proactive way to integrate shipping and inventory needs across all modes of transportation



[LinkedIn](#)



[Twitter](#)



[Blog](#)

- Align Interests with Customers
- Drive Efficiencies
- Ensure Complete and Timely Data
- Deliver Cost Out Transportation
- 100% Transparent